



OnRobot A/S

Teglvaerksvej 47H

5220 Odense

Denmark

[info@onrobot.com](mailto:info@onrobot.com)

onrobot.com

## Before-you-buy – IT and Network requirements

This whitepaper is intended to inform potential customers about WebLytics infrastructure requirements prior to purchase.

WebLytics is a production monitoring server application that is expected to run continuously. It should be installed on a dedicated PC by an IT administrator.

Requirements for the host computer:

- Minimum 4 core CPU @ 2.5 GHz,
- Minimum 16 GB RAM,
- Minimum 1 TB HDD,
- Windows Server 2019, Windows 10, Debian 10.7 or later, Ubuntu 18 or later.

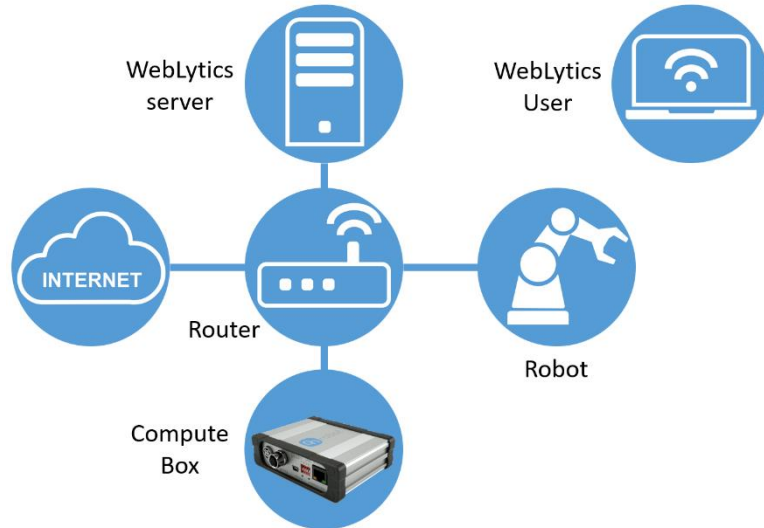
In addition to the system recommendations, the computer

- should have continuous access to the Internet,
- should have UPS for safe and uninterrupted operation,
- needs scheduled host Operating System updates.

The hosting environment must meet the following networking requirements:

- Proper Ethernet network cabling in production environment for stable monitoring of robots and access to the Compute Box,
- Proper network connection between the robot, the Compute Box and the WebLytics server (company Intranet).
- The recommendation for the company Intranet connection is a router, connected to the public Internet, with:
  - DHCP enabled and configured,
  - WiFi configured,
  - UPS for safe, uninterrupted operation.

WebLytics users will be able to access the WebLytics server from any PC or mobile device, via wired LAN or WiFi connection within the same company Intranet.



Make sure that all cables are protected against any disturbances for the continuous connectivity between the devices and the WebLytics server.

The illustration above shows the recommended network configuration. It is possible to deploy WebLytics in a different configuration, e.g., with several IP subnetworks connected by one or more routers. Regardless of the specific network configuration, it is important to ensure that the WebLytics requirements are met, to ensure a successful WebLytics installation and operation.