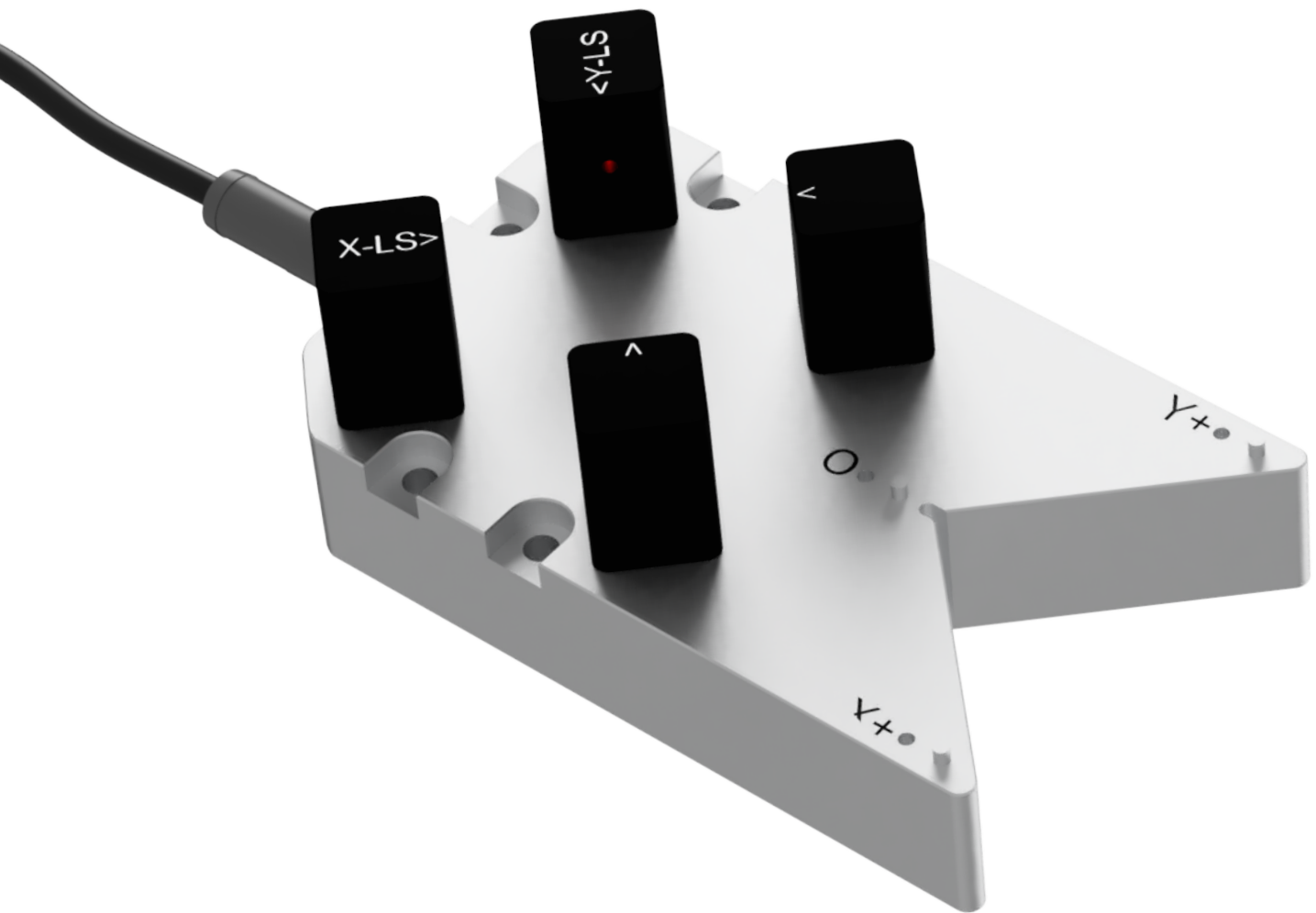


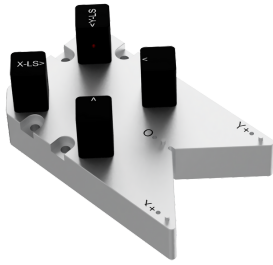
# AIM ROBOTICS <sup>TM</sup>



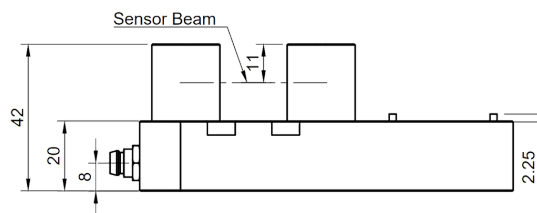
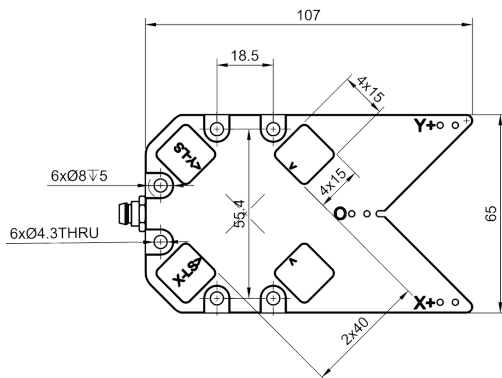
## TCP CALIBRATION TOOL

Calibrate 3-axis simultaneously

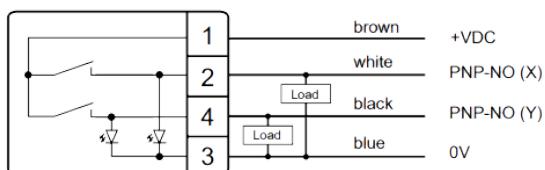
## AIM-TCP-01



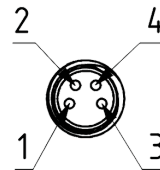
- *Compact Design*
- *Built-in Plane Feature*
- *Operator safe LED technology*



### Connection Diagram



### M8 4-pin pinout



### Technical Data at 24V DC and 20 °C

Minimum sensing object	ø0.3 mm <b>ø0.012 in</b> opaque object
Repeatability (Perpendicular to sensing axis)	0.02 mm <b>0.001 in</b> or less
Supply Voltage	12 to 24 V DC ±10 % Ripple P-P 10 % or less
Current Consumption	Emitter: 10 mA or less, Receiver: 10 mA or less
Output	PNP open-collector transistor <ul style="list-style-type: none"> <li>• Maximum source current: 20mA</li> <li>• Applied voltage: 30 V DC or less (between output and +V)</li> <li>• Residual voltage 1.5 V or less (at 20mA source current)</li> </ul>
Short Circuit Protection	Incorporated
Response time	0.5 ms or less
Operation indicator	Orange LED (Lights up when the sensing output is ON)
Stability indicator	Green LED (Lights up under the stable light received condition)
Operating temperature	-10 to +55 °C <b>14 to +131 °F</b> (No dew condensation or icing)
IP Class	IP65 (IEC)
Light Element	Red LED (Peak emission wavelength: 650nm 0.026mil modulated)
Housing Material	Aluminum 6061
Weight	500g <b>1.0lbs</b>

☎ +45 31 51 55 11

🌐 [aim-robotics.com](http://aim-robotics.com)

@ [sales@aim-robotics.com](mailto:sales@aim-robotics.com)

